

# Rozwiązania programowe dla RVI



imagination at work

**GE Proprietary Information** – The information contained in this document is General Electric Company (GE) proprietary information and is disclosed in confidence. It is the property of GE and shall not be used, disclosed to others or reproduced without the express written consent of GE, including, but without limitation, it is not to be used in the creation, manufacture, development, or derivation of any repairs, modifications, spare parts, designs, or configuration changes or to obtain FAA or any other government or regulatory approval to do so. If consent is given for reproduction in whole or in part, this notice and the notice set forth on each page of this document shall appear in any such reproduction in whole or in part. The information contained in this document may also be controlled by the U.S. export control laws. Unauthorized export or re-export is prohibited.

# Menu Directed Inspection

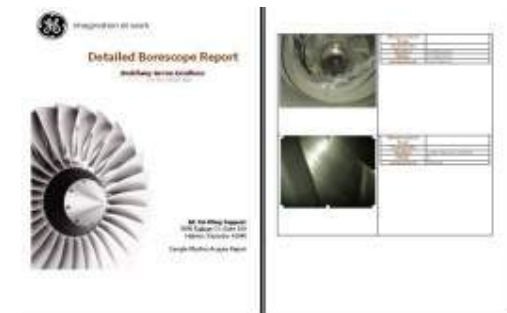
Zapis w XLG3(s)



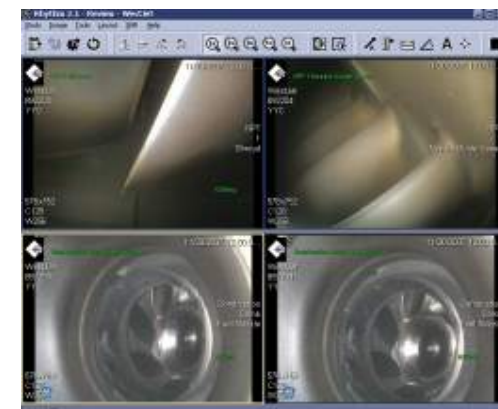
Uruchomienie  
Inspekcji



Automatyczne  
generowanie  
raportu – dane  
gotowe do analizy



Przygotowanie  
Planu Badania



# Rhythm - *Turning information into intelligence*

Zapis, Analiza, Udostępnianie,  
Raportowanie i archiwizacja danych

